

# Welcome to our Group Packages



Welcome to LILA\* where we love to learn!

LILA\* was established in 2004 as an independent language school by two sisters. Since then the school has gone from strength to strength, resulting in our brand new, custom designed school in the heart of Liverpool city centre.

We hope that once you have read this booklet you will see what we have to offer; we'll tell you a little about Liverpool, the school and the standard group packages that we offer. Remember, groups mean discounts!

If you don't see what you're looking for then contact the team on [groups@liverpoolila.com](mailto:groups@liverpoolila.com) and we will be happy to provide you with a bespoke group offer, just for you!



## LILA\* loves Liverpool...you will too!

Liverpool has so much to offer as a vibrant, iconic, cultural European destination. In 2008 the city held a successful year as European Capital of Culture. Since then the city has continued to develop and we want to share these exciting times with you.

Liverpool is now home to fabulous shopping with the recent addition of the new Liverpool ONE shopping centre, right in the heart of the city. This shiny new designer shopping centre is world class, which is only fitting for a city that can shop till it drops. Feeling hungry? There are numerous quality restaurants, from sleek fine dining to independent bistros and high street favourites, and it can tick just about every box in terms of international cuisine, ranging from top Indians to spicy Thais. You'll be spoilt for choice.

Liverpool loves sport! There is plenty for sports fans as there are two of the Premiership's biggest football teams here, Liverpool Football Club at Anfield and Everton Football Club at Goodison Park. The region is also home to England's Golf Coast, the finest stretch of championship golf in the world, hosting many Open Championships and Ryder Cups. The city also stages the biggest social event in the sporting calendar, the world-famous John Smith's Grand National each year at its Aintree Racecourse.

Liverpool has more theatres, museums and galleries than any other city outside of London. Visit the Walker Art Gallery, the National Gallery of the North and the Tate Liverpool situated at the Albert Dock.

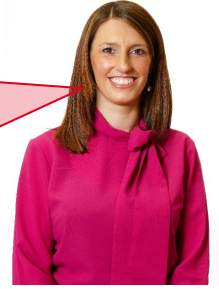
You'll love the people too, who are famously friendly and will welcome you with pride. Their sense of fun and love of a great night out makes the nightlife legendary in Liverpool. We guarantee that our lively social programme lives up to its reputation and has something to offer everyone!





*The LILA\* vision is simple: We want to inspire and enable our students to "Love to Learn". We like to think that once a LILA\* student, always a LILA\* student.*

**Leanne Linacre, Director**



## Facilities

Our school boasts fresh, contemporary learning facilities and a great location. We have 18 classrooms, each individually designed with a Liverpool-theme, a super-cool new common room with cafe style seating, a kitchen with drinks and snack dispensers, table football game, 42" LCD television, free computers and WIFI, a self access IT suite for independent study, a quiet area for reading and quiet chat. In our new school and brilliant location LILA\* students really will **Love to Learn**.

## Dedication to Quality Teaching

Did you know that LILA\* is an accredited teacher training centre? That means that we can guarantee a high standard of teaching due to the strong in-house training provided by our academic management team who are qualified teacher trainers. We promise that all our teachers will have a minimum of a CELTA qualification and benefit from continuous professional development and support.

## Student Welfare

At LILA\* we understand that coming to study English in the UK is about more than just the language tuition. Sometimes students find they have difficulty adjusting to the British culture and sometimes, they just feel a little homesick. Because of this, we make sure our students receive out-of-class care by providing a social welfare officer who is there to help with all those little issues of a more personal nature. We also provide a 24 hour emergency number so students always have someone to call.



*At LILA\* we make a promise to our students: we'll provide a fresh, contemporary environment in an iconic location, ensure they receive a complete student experience with quality teaching, making sure they receive great value for money. All of this delivered with that unique and personal touch that makes us LILA\*.*

**Victoria Lee, Director**



## Social Programme

LILA\* students can join us in a range of social activities that run alongside the courses we offer. Some activities give students a taste of the unique culture and history of Liverpool; others may be more about relaxing and meeting other LILA\* students in fun destinations around the city. While we know that students will enjoy every moment of their time in Liverpool, we also encourage them to take day trips around the region to experience a different side of Britain.



# Accommodation



## Homestay (staying with a local family)



Homestay is perfect for those students who want to immerse themselves in the English culture. Staying with local people they are welcomed into the family so that they have a home away from home.

Maximum journey 45 minutes, average 20 minutes.

**Half board** provides breakfast and hot dinner, Monday to Saturday, breakfast, hot lunch and dinner Sunday.

**Full board** provides breakfast, packed lunch, hot dinner, Monday to Saturday, breakfast, hot lunch and dinner Sunday.

## University Residence

Available from 3rd July to 28th August 2011

University residence is quality city centre accommodation for students willing to share with other students of LILA\*. It is high standard, modern accommodation with en-suite facilities, common areas and fully equipped kitchens. Residence is located within walking distance of LILA\* and is perfect for groups of friends coming together and wanting to share a flat.

All residence includes: single, en-suite bedrooms, shared kitchen facilities, common areas, wi-fi, 24 hour check in, onsite management and security, laundry facilities and digital television in the common areas. Please note that some residential accommodation facilities charge a nominal fee for laundry (£3). Internet connection is available in the residence for a small fee.



## Creating your perfect LILA\* Package

We want to ensure that your students have a fantastic time whilst they study with us at LILA\* so if you can't see what you're looking for in the following pages then contact the LILA\* team on [groups@liverpoolila.com](mailto:groups@liverpoolila.com).

We aim to make our packages as flexible as possible so students receive exactly what they're looking for. Additional excursions or activities can be added from just £5 and students can take advantage of our optional upgrades to make their trips that little bit more special.

We also allow a downgrade option; so if students want less time on scheduled LILA\* trips and have more free time then that's fine too—we'll adjust the package (and price!) so students know they're getting real value for money and an experience to remember.



# EFL Adult Packages



## Standard

Our Standard Adult Package provides 15 hours (20 lessons) of English tuition and a varied, high quality social programme. Students will join our international General English course.

Our General English course helps students to improve their English by focusing on grammatical, lexical and functional concepts in a variety of communicative contexts while utilising all four skills. The courses aim to give students confidence in communicating in an English speaking environment and enable them to deal with situations from the social and educational environment to the workplace.

**START DATES**  
Any Monday

**LEVELS AVAILABLE**  
Elementary to Advanced  
(A2 to C2 CEFR)

**MAXIMUM CLASS SIZE**  
15

**MINIMUM AGE**  
18

### Sample Timetable:

| Sunday   | Monday                   | Tuesday                   | Wednesday                | Thursday                  | Friday                   | Saturday                        |
|----------|--------------------------|---------------------------|--------------------------|---------------------------|--------------------------|---------------------------------|
|          | Lessons 9:00 to 12:15    |                           |                          |                           |                          |                                 |
| Arrivals | Orientation Tour         | Social Programme Activity | Tour of Albert Dock **   | Social Programme Activity | Beatles Tour**           | Full Day Excursion to Chester** |
|          | Evening with Host Family | LILA* Evening Activity    | Evening with Host Family | LILA* Evening Activity    | Evening with Host Family |                                 |

\*\*Optional excursion upgrade available

**Albert Dock** – Add trip on the Liverpool Big Wheel for just £6    **Beatles Tour** – Add visit to the Beatles Story Museum for just £6.50    **Chester** – Add entrance to the Cathedral for just £5

### Package Price Includes:

- 15 Hours English Tuition per week
- Course Material
- Half Price Registration Fee
- Free Accommodation Booking Fee
- Free Arrival Transfer from Liverpool Airport
- Standard Social Programme:  
x5 half day/evening activities/excursions  
x1 full day excursion
- Full access to Student Self-Learning Suite
- Full access to IT Suite
- Pastoral Care with LILA\* Social Welfare Officer
- English Club
- Welcome Study Pack & Learner Log
- Pre-Arrival Level Test
- LILA\* Certificate upon completion of course



| EFL Adult Standard<br>Fees Per Week | 4 - 10<br>students | 11 - 15<br>students | 16 - 20<br>students | 21+.<br>students |
|-------------------------------------|--------------------|---------------------|---------------------|------------------|
| Homestay, Half Board                | £330               | £320                | £310                | £300             |
| Homestay, Full Board                | £350               | £340                | £330                | £320             |
| University Residence, Self Catering | £370               | £360                | £350                | £340             |



# EFL Adult Packages



## Intensive

Our Intensive Adult Package is for the more serious student who wants to improve their English quickly. Students will join our General English Plus course and receive 21 hours (28 lessons) of English tuition a week.

Our General English course helps students to improve their English by focusing on grammatical, lexical and functional concepts in a variety of communicative contexts while utilising all four skills. The courses aim to give students confidence in communicating in an English speaking environment and enable them to deal with situations from the social and educational environment to the workplace. Our Plus Six course is designed to supplement our General English course and allows the teachers to cater lessons more towards the requirements of the students and emphasise a more communicative approach to the lessons.

**START DATES**  
Any Monday

**LEVELS AVAILABLE**  
Elementary to Advanced  
(A2 to C2 CEFR)

**MAXIMUM CLASS SIZE**  
15

**MINIMUM AGE**  
18

### Sample Timetable:

| Sunday   | Monday                 | Tuesday                  | Wednesday              | Thursday               | Friday                 | Saturday                        |
|----------|------------------------|--------------------------|------------------------|------------------------|------------------------|---------------------------------|
|          | Lessons 9:00 to 12:15  |                          |                        |                        |                        | Full Day Excursion to Chester** |
| Arrivals | Lessons 12:30 to 14:00 |                          |                        |                        | Beatles Tour**         |                                 |
|          | LILA* Evening Activity | Evening with Host Family | Tour of Albert Dock ** | LILA* Evening Activity | LILA* Evening Activity |                                 |

\*\*Optional excursion upgrade available

**Albert Dock** – Add trip on the Liverpool Big Wheel for just £6    **Beatles Tour** – Add visit to the Beatles Story Museum for just £6.50    **Chester** – Add entrance to the Cathedral for just £5

### Package Price Includes:

- 21 Hours English Tuition per week
- Course Material
- Half Price Registration Fee
- Free Accommodation Booking Fee
- Free Arrival Transfer from Liverpool Airport
- Standard Social Programme:
  - x5 half day/evening activities/excursions
  - x1 full day excursion
- Full access to Student Self-Learning Suite
- Full access to IT Suite
- Pastoral Care with LILA\* Social Welfare Officer
- English Club
- Welcome Study Pack & Learner Log
- Pre-Arrival Level Test
- LILA\* Certificate upon completion of course



| EFL Adult Intensive Fees Per Week   | 4 - 10 students | 11 - 15 students | 16 - 20 students | 21+ students |
|-------------------------------------|-----------------|------------------|------------------|--------------|
| Homestay, Half Board                | £360            | £350             | £340             | £330         |
| Homestay, Full Board                | £380            | £370             | £360             | £350         |
| University Residence, Self Catering | £400            | £390             | £380             | £370         |



# EFL Adult Packages



## Premium

Our Premium Adult Package provides 15 hours (20 lessons) of English tuition and a varied, high quality social programme. Students will join our international General English course and enjoy our premium level social programme which ensures they experience the best of the North West and British culture.

Our General English course helps students to improve their English by focusing on grammatical, lexical and functional concepts in a variety of communicative contexts while utilising all four skills. The courses aim to give students confidence in communicating in an English speaking environment and enable them to deal with situations from the social and educational environment to the workplace.

**START DATES**  
Any Monday

**LEVELS AVAILABLE**  
Elementary to Advanced  
(A2 to C2 CEFR)

**MAXIMUM CLASS SIZE**  
15

**MINIMUM AGE**  
18

### Sample Timetable:

| Sunday   | Monday                 | Tuesday                         | Wednesday                     | Thursday                 | Friday                 | Saturday                        |
|----------|------------------------|---------------------------------|-------------------------------|--------------------------|------------------------|---------------------------------|
|          | Lessons 9:00 to 12:15  |                                 |                               |                          |                        |                                 |
| Arrivals | Orientation Tour       | Excursion to Walker Art Gallery | Excursion to St George's Hall | Tour of Albert Dock**    | Beatles Tour**         | Full Day Excursion to Chester** |
|          | LILA* Evening Activity | Evening with Host Family        | LILA* Evening Activity        | Evening with Host Family | LILA* Evening Activity |                                 |

\*\*Optional excursion upgrade available

**Albert Dock** – Add trip on the Liverpool Big Wheel for just £6    **Beatles Tour** – Add visit to the Beatles Story Museum for just £6.50    **Chester** – Add entrance to the Cathedral for just £5

### Package Price Includes:

- 15 Hours English Tuition per week
- Course Material
- Half Price Registration Fee
- Free Accommodation Booking Fee
- Free Arrival Transfer from Liverpool Airport
- Departure Transfer to Liverpool Airport
- Standard Social Programme:
  - x5 half day/evening activities/excursions
  - x1 full day excursion
- Full access to Student Self-Learning Suite
- Full access to IT Suite
- Pastoral Care with LILA\* Social Welfare Officer
- English Club
- Welcome Study Pack & Learner Log
- Pre-Arrival Level Test
- LILA\* Certificate upon completion of course



| EFL Adult Premium Fees Per Week     | 4 - 10 students | 11 - 15 students | 16 - 20 students | 21+ students |
|-------------------------------------|-----------------|------------------|------------------|--------------|
| Homestay, Half Board                | £380            | £370             | £360             | £350         |
| Homestay, Full Board                | £400            | £390             | £380             | £370         |
| University Residence, Self Catering | £420            | £410             | £400             | £390         |



# Teacher Training Packages



## Cambridge TKT: 1 week

Our intensive Cambridge TKT course is perfect for teachers who not only want to improve their teaching skills but also come away with an internationally recognised qualification.

Students will be taught by our qualified teacher trainers and receive 22.5 hours of tuition; finishing off their week with the Cambridge TKT examinations.

We provide full exam support with a mock test and feedback session as well as a Study Support Session for those last minute questions.

With exam fees included and no “fail” grade (TKT is banded 1 to 4) this course is undoubtedly a sound investment for those teachers who are interested in professional development.

**START DATES**  
Any Monday

**MINIMUM LEVEL**  
Intermediate  
(B1 CEFR)

**MAXIMUM CLASS SIZE**  
15

**MINIMUM AGE**  
18

### Sample Timetable:

|             | Monday                              | Tuesday                     | Wednesday               | Thursday                   | Friday   |
|-------------|-------------------------------------|-----------------------------|-------------------------|----------------------------|----------|
| 9:00—10:30  | Intro to TKT & Classroom Management | Vocabulary I                | Functions               | Writing & Error Correction | TEST DAY |
| 10:45—12:15 | Reading & Listening                 | Phonology                   | Testing                 | Vocabulary II              |          |
| 13:15—14:45 | Learner Background                  | Speaking & Error Correction | Supplementary Materials | Trial Test & Feedback      |          |
| 15:00—16:00 | Grammar I                           | Lesson Planning             | Grammar II              | Study Support Session      |          |

### Package Price Includes:

- 22.5 Hours Tuition
- Course Material
- Exam Fees
- Half Price Registration Fee
- Free Accommodation Booking Fee
- Free Arrival Transfer from Liverpool Airport
- Full access to Student Self-Learning Suite
- Full access to IT Suite
- Pastoral Care with LILA\* Social Welfare Officer
- Welcome Study Pack & Learner Log
- Exam support: mock test with feedback
- Cambridge Certificate upon completion of course



| Cambridge TKT 1 Week Package        | 4 - 10 students | 11 - 15 students | 16 - 20 students | 21+ students |
|-------------------------------------|-----------------|------------------|------------------|--------------|
| Homestay, Half Board                | £290            | £280             | £270             | £260         |
| Homestay, Full Board                | £310            | £300             | £290             | £280         |
| University Residence, Self Catering | £330            | £320             | £310             | £300         |



# Teacher Training Packages



## Cambridge TKT: 2 week

Our 2 week Cambridge TKT course is for teachers who not only want to come away with an internationally recognised teaching qualification, but also have the chance to see some of the sights of Liverpool.

Students will be taught by our qualified teacher trainers and receive 22.5 hours of tuition which is spread over the two weeks, with their Cambridge TKT examinations on the final day.

We provide full exam support with a mock test and feedback session as well as a Study Support Session for those last minute questions.

With exam fees included and no “fail” grade (TKT is banded 1 to 4) this course is undoubtedly a sound investment for those teachers who are interested in professional development.

### Sample Timetable:

| Sunday   | Monday                   | Tuesday                   | Wednesday                | Thursday                  | Friday                   | Saturday                        |
|----------|--------------------------|---------------------------|--------------------------|---------------------------|--------------------------|---------------------------------|
|          | Lessons 9:00 to 12:15    |                           |                          |                           |                          |                                 |
| Arrivals | Orientation Tour         | Social Programme Activity | Tour of Albert Dock **   | Social Programme Activity | Beatles Tour**           | Full Day Excursion to Chester** |
|          | Evening with Host Family | LILA* Evening Activity    | Evening with Host Family | LILA* Evening Activity    | Evening with Host Family |                                 |

\*\*Optional excursion upgrade available

**Albert Dock** – Add trip on the Liverpool Big Wheel for just £6

**Beatles Tour** – Add visit to the Beatles Story Museum for just £6.50

**Chester** – Add entrance to the Cathedral for just £5

### Package Price Includes:

- 22.5 hours Tuition in total
- Course Material
- Exam Fees
- Half Price Registration Fee
- Free Accommodation Booking Fee
- Free Arrival Transfer from Liverpool Airport
- Full access to Student Self-Learning Suite
- Full access to IT Suite
- Standard Social Programme
  - x5 half day/evening activities/excursions
  - x1 full day excursion
- Pastoral Care with LILA\* Social Welfare Officer
- Welcome Study Pack & Learner Log
- Exam support: mock test with feedback
- Cambridge Certificate upon completion of course



| Cambridge TKT 2 Week Package        | 4 - 10 students | 11 - 15 students | 16 - 20 students | 21+ students |
|-------------------------------------|-----------------|------------------|------------------|--------------|
| Homestay, Half Board                | £560            | £545             | £530             | £515         |
| Homestay, Full Board                | £600            | £585             | £570             | £555         |
| University Residence, Self Catering | £640            | £625             | £610             | £595         |

**START DATES**  
Any Monday

**MINIMUM LEVEL**  
Intermediate  
(B1 CEFR)

**MAXIMUM CLASS SIZE**  
15

**MINIMUM AGE**  
18



# Teacher Training Packages



## Teaching Methodology

Make the most of your English course in Liverpool by improving your teaching skills at the same time.

Our Teaching Methodology Course has been designed by our CELTA teacher trainers. The course, a combination of General English and Teaching Methodology, is designed for non-native teachers of English to adults and teenagers.

This course combines 3 hours of general English and 2 hours of methodology daily. The methodology sessions have been chosen and developed to encompass a broad range of EFL topics and to cover the most recent developments in English language teaching.

**START DATES**  
Any Monday

**MINIMUM LEVEL**  
Upper Intermediate (B2 CEFR)

**MAXIMUM CLASS SIZE**  
15

**MINIMUM AGE**  
18

### Sample Timetable:

| Sunday   | Monday                                      | Tuesday | Wednesday | Thursday | Friday | Saturday                          |
|----------|---|---------|-----------|----------|--------|-----------------------------------|
|          | General English Lessons 9:00 to 12:15       |         |           |          |        | Add full day excursions from £15! |
| Arrivals | Teaching Methodology Lessons 12:30 to 14:30 |         |           |          |        |                                   |
|          | Add evening activities from just £5!        |         |           |          |        |                                   |

### Package Price Includes:

- 25 hours Tuition per week
- Course Material
- Half Price Registration Fee
- Free Accommodation Booking Fee
- Free Arrival Transfer from Liverpool Airport
- Full access to Student Self-Learning Suite
- Full access to IT Suite
- Pastoral Care with LILA\* Social Welfare Officer
- Optional social programme additions
- Welcome Study Pack & Learner Log
- LILA\* Certificate upon completion of course



| Teaching Methodology Fees Per Week  | 4 - 10 students | 11 - 15 students | 16 - 20 students | 21+ students |
|-------------------------------------|-----------------|------------------|------------------|--------------|
| Homestay, Half Board                | £335            | £325             | £315             | £305         |
| Homestay, Full Board                | £355            | £345             | £335             | £325         |
| University Residence, Self Catering | £375            | £365             | £355             | £345         |



# Teacher Training Packages



## Intensive Teaching Methodology

Make the most of your English course in Liverpool by improving your teaching skills at the same time.

Our Teaching Methodology Course has been designed by our CELTA teacher trainers and is designed for non-native teachers of English to adults and teenagers.

This course provides 3 hours of methodology daily and the sessions have been chosen and developed to encompass a broad range of EFL topics and to cover the most recent developments in English language teaching.

**START DATES**  
Any Monday

**MINIMUM LEVEL**  
Upper Intermediate (B2 CEFR)

**MAXIMUM CLASS SIZE**  
15

**MINIMUM AGE**  
18

### Sample Timetable:

| Sunday   | Monday                   | Tuesday                   | Wednesday                | Thursday                  | Friday                   | Saturday                        |
|----------|--------------------------|---------------------------|--------------------------|---------------------------|--------------------------|---------------------------------|
|          | Lessons 9:00 to 12:15    |                           |                          |                           |                          |                                 |
| Arrivals | Orientation Tour         | Social Programme Activity | Tour of Albert Dock **   | Social Programme Activity | Beatles Tour**           | Full Day Excursion to Chester** |
|          | Evening with Host Family | LILA* Evening Activity    | Evening with Host Family | LILA* Evening Activity    | Evening with Host Family |                                 |

\*\*Optional excursion upgrade available

**Albert Dock** – Add trip on the Liverpool Big Wheel for just £6    **Beatles Tour** – Add visit to the Beatles Story Museum for just £6.50    **Chester** – Add entrance to the Cathedral for just £5

### Package Price Includes:

- 15 hours Tuition per week
- Course Material
- Half Price Registration Fee
- Free Accommodation Booking Fee
- Free Arrival Transfer from Liverpool Airport
- Full access to Student Self-Learning Suite
- Full access to IT Suite
- Standard Social Programme
  - x5 half day/evening activities/excursions
  - x1 full day excursion
- Pastoral Care with LILA\* Social Welfare Officer
- Welcome Study Pack & Learner Log
- LILA\* Certificate upon completion of course



| Teaching Methodology Fees Per Week  | 4 - 10 students | 11 - 15 students | 16 - 20 students | 21+ students |
|-------------------------------------|-----------------|------------------|------------------|--------------|
| Homestay, Half Board                | £310            | £300             | £290             | £280         |
| Homestay, Full Board                | £330            | £320             | £310             | £300         |
| University Residence, Self Catering | £350            | £340             | £330             | £320         |

